



Newsletter

Friday 24th January 2025

GREENHEART
LEARNING PARTNERSHIP

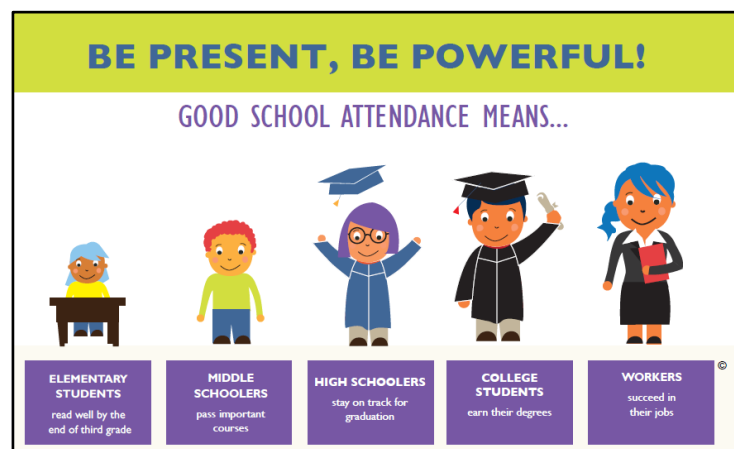
Pye Green
Academy
Rosehill,
Cannock,
Staffordshire
WS12 4RT

Tel: 01543 227175

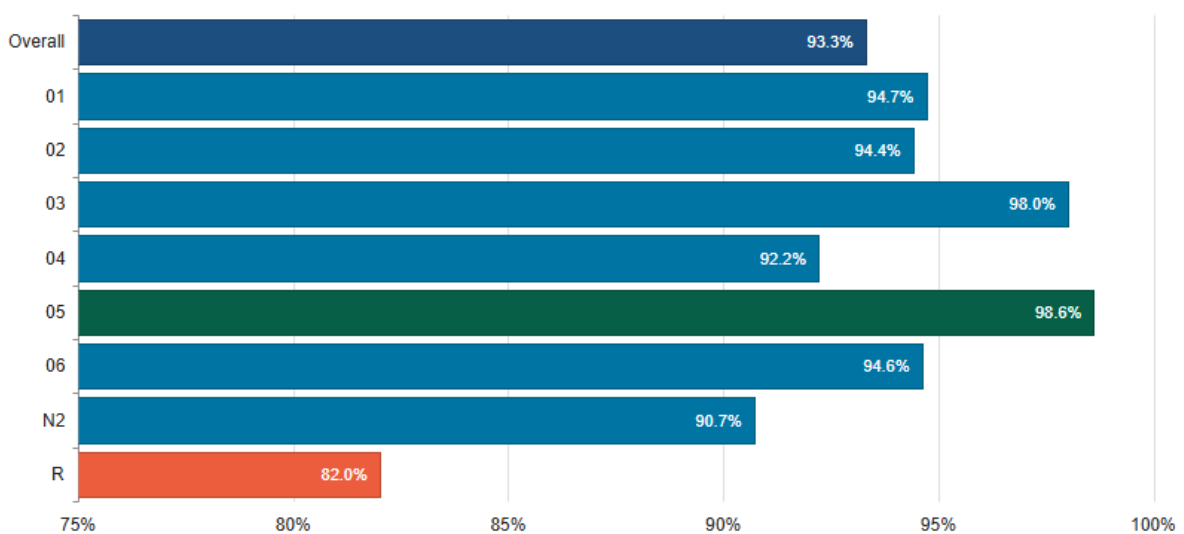
Menu for week
commencing
27/01/2025 showing on last page of newsletter

enquiries@pga.greenheartlearning.org

Attendance



Certificates will go to all classes with over 97% attendance.
Once they collect 6 certificates, they will enjoy a reward with their peers.



Congratulations to Year 5 for amazing attendance this week 😊
Fantastic attendance for Year 3 too this week.

[Greenheart Updates/School Developments](#)



Today, Mrs Yates met with all Greenheart Headteachers and the Senior Leadership Team to discuss upcoming initiatives for the Partnership.

Our staff have also completed Cyber Security training. Security awareness training helps organisations reduce the risk of data breaches, malware infections, phishing attempts and other malicious activities. By providing Pye Green staff with the knowledge and skills they need to stay safe online, we can ensure our data is secure and protected from cyberattacks.

Transition

Participation

Communication

Guidance

Induction

Home-School Links

[Key Stage 1 Meal Samples](#)

All children in Reception, Year 1 and Year 2 are entitled to a **free school meal** every day of the week.

We have a wide range of freshly prepared, healthy options every day, including fresh fruit and vegetables. We would like to encourage more families to take up this free offer, rather than bringing packed lunches from home.

With this in mind, we plan to offer pupils taster samples when they are in the hall, in the hope that some will be tempted to try some of the options on offer. Each week, a certain year group will be the focus and 10 children per day will receive the samples. Children will not be forced to try the samples but will be encouraged by staff. They will still be allowed to eat their packed lunch.

If your child has been chosen, please speak to them about the possibility of trying a school meal on some days of the week, if not every day. The menu is always included on the newsletter so you can speak to your child about the options. There is always a jacket potato and sandwich option too.

You may be surprised, sometimes children eat things in school they wouldn't even try at home!

Participation



Home-School Links

National Child Measurement Programme

As in previous years the Families' Health and Wellbeing (0-19) service has been commissioned by Staffordshire County Council to deliver the National Child Measurement Programme.

We have arranged for members of the Families' Health and Wellbeing team to visit the school on **Tuesday 1st April 2025** to complete the height and weight measurements for **Reception and Year 6**. The checks will be carried out sensitively and in line with the school and local authority's safety control measures.

Please check you emails in the coming weeks for more information regarding this.



Nursery Applications September 2025

The closing date for Nursery applications is 12.00pm on Friday 7th March.

If you know of anyone who would like a place in our Nursery for September 2025, please let them know.

We are holding two visits for parents to come and view our Nursery and meet staff.

These will be held on

Tuesday 25th February 3.45-4.15pm
Wednesday 26th February 3.45-4.15pm



Polling Day (Thursday 1st May 2025)

As in previous years, we have been approached to be used as a Polling Station for upcoming elections in May. Usually, only Nursery is closed but, this year, the requirement is for two Polling Stations and bigger facilities. This means that we will unfortunately have to close for the whole school on Thursday 1st May 2025 as the main building will also be used.

Information from Staffordshire County Council

The Returning Officer has a right by law to make use of any school premises for the purpose of an election/referendum. This statutory entitlement is equally applicable to Academies and other non-maintained schools and the Representation of the People Act, 1983 (Schedule 1, rule 22 (1)(b) applies.

Under that provision, in England and Wales a school maintained or assisted by a local authority or a school in respect of which grants are made out of moneys provided by Parliament to the person or body of persons responsible for the management of the school may be used.
Consequently, Schools and Academies cannot refuse such a request.



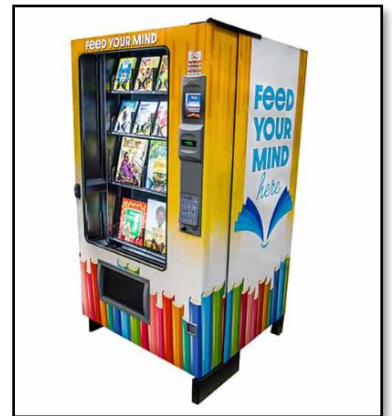


Thank you so much for all the feedback we received from the PTFA parent survey. We've used this to help shape the events for the rest of the year. Following feedback, we're looking at adding a way to pay for tickets online. We will send out more details for the disco next week.

The next event will be a **Groovy to be Kind Disco** on Wednesday 26th February (Rec, Y1 and Y2 - 3:30-4:15 and Yrs 3, 4 and 5 4:30-5:15).

Miss Millington is going to talk to Yr 6 about what they'd like to do, and we'll plan something different for them too!

PTFA current fundraising will be going towards providing the school with a 'book vending machine' which all pupils will be able to benefit from.



[Home-School Links](#)



[After School Sport Clubs](#)

Just a reminder that sports clubs for Year 5 and Year 6 will continue until February Half Term.

Letters will be sent out about clubs starting after Half Term.



[Also Attached to the Newsletter This Week](#)

NHS Heights and Weights Information

[What's Happening Next Week?](#)

Year 1 Come Dine with Me
Year 4 MTC Parent Meetings

[Look Out For](#)

Parents' Evening Letters Coming Home

Upcoming Events – More Details to Follow

Wednesday 29th January – Year 1 Come Dine with Me
Wednesday 29th January – Year 4 MTC Parents meeting am
Thursday 30th January – Year 4 MTC Parents meeting pm
Tuesday 4th February – Y5 to see Grease the Musical at Kingsmead
Wednesday 12th February – Parents' Evening
Thursday 13th February – Parents' Evening
Monday 24th February to Friday 28th February – Year 5 Bikeability (Level 1 and 2) 6 children per day
Tuesday 25th February – Nursery Open Evening (for prospective parents)
Wednesday 26th February – PTFA It's Groovy to be Kind Disco (Reception - Y5) more details to follow and Y6 PTFA event tbc
Wednesday 26th February – Nursery Open Evening (for prospective parents)
Wednesday 25th June – KS2 Jungle Book production
Wednesday 5th March – Year 2 Come Dine with Me
Thursday 6th March – World Book Day
Friday 7th March – Deadline for Nursery Applications
Thursday 13th March – Nursery Places Allocated for September 2025
Thursday 20th March – Nursery Places Deadline to Accept
Tuesday 1st April 2025 – Reception and Year 6 NHS Heights and Weights
Tuesday 1st April – Y5 British Cycling Session (Chestnut 1)
Friday 4th April – PTFA non-uniform day (chocolate donation)
Monday 7th April – PTFA Chocolate Bingo (session 1)
Tuesday 8th April – Y5 British Cycling Session (Chestnut 2)
Wednesday 9th April – PTFA Chocolate Bingo (session 2)
Wednesday 9th April – Year 3 Come Dine with Me
Thursday 10th April – Year 4 Bikeability (Level 1)
Tuesday 29th April – Year 5 British Cycling Session on the Chase (session 1) further details to follow
Tuesday 6th May – Year 5 British Cycling Session on the Chase (session 2) further details to follow
Tuesday 6th May – Tempest Photographs for Reception and Year 6
Friday 9th May – PTFA Afterschool Event (tbc)
Tuesday 13th May – Year 5 British Cycling Session on the Chase (session 3) further details to follow
Monday 19th May – Pye Green Academy Science Week
Tuesday 20th May – Year 5 British Cycling Session on the Chase (session 4) further details to follow
Wednesday 21st May – Year 4 Come Dine with Me
Tuesday 3rd June – Reception Dinosaur Day
Monday 9th June – Oceans Day
Wednesday 11th June – Year 5 Come Dine with Me
Wednesday 25th June – KS2 Jungle Book Production
Wednesday 9th July – Year 6 Leaver's Lunch
Wednesday 9th July – Year 6 Prom
Saturday 12th July – PTFA Summer Fair

Crucial Assessment Dates for 2024/2025

Throughout May 2025 – Y2 SATS tests (Please do not book holidays this month)
Monday 12th May – Thursday 15th May 2025 – Year 6 SATS (please do not book holidays this week)
Monday 2nd June – Friday 13th June 2025 – Y4 Times Tables Check (please do not book holidays this fortnight)
Monday 9th June – Friday 13th June 2025 – Year 1 Phonics Screening Week (Please do not book holidays this week)

Dates for 2025/2026 can be found by following the link <https://www.gov.uk/guidance/primary-assessments-future-dates>

School Year 2024 to 2025

Spring Term 2025

Term Starts: Tuesday 7th January

Holiday: Monday 17 February – Friday 21 February

Term Ends: Friday 11 April

Holiday: Monday 14 April – Friday 25 April

Summer Term 2025

Term Starts: Monday 28 April

POLLING DAY: Thursday 1 May (school closed)

May Day: Monday 5 May

Holiday: Monday 26 May – Friday 30 May

Monday 2nd June Inset day; school closed to children (INSET DAY 4)

Term Ends: Friday 18th July

Holiday: Monday 21st July – Friday 29 August

Monday 21st July Inset day; school closed to children (INSET DAY 5)

School Year 2025 to 2026

Autumn Term 2025

Monday 1 September INSET DAY – School closed to children (INSET DAY 1)

Term Starts: Tuesday 2 September

Holiday: Monday 27 October – Friday 31 October

Term Ends: Friday 19 December

Holiday: Monday 22 December – Friday 2 January

Spring Term 2026

Term Starts: Monday 5 January

Holiday: Monday 16 February – Friday 20 February

Term Ends: Friday 27 March

Holiday: Monday 30 March – Friday 10 April

Easter Sunday: Sunday 5 April

Summer Term 2026

Term Starts: Monday 13 April

May Day: Monday 4 May

Holiday: Monday 25 May – Friday 29 May

Term Ends: Monday 20 July

Holiday: Tuesday 21 July – Monday 31 August

Week One Date W/C 27/01/2025

Primary Menu Week 1	MONDAY	TUESDAY	WEDNESDAY	THURSDAY	FRIDAYS
Main Course (Red)	Hunter's Chicken	Pork Sausages	Roast Chicken & Gravy	Fish Fingers	Chicken Chow Mein
Vegetarian Main Course (Green)	Pasta Neapolitan	Vegetarian Sausages	Quarn Balls & Gravy	Vegetarian Sausage Roll	Cheese & Tomato Pizza
Yellow	Jacket Potato with Cheese, Baked Beans	Jacket Potato with Cheese, Baked Beans	Jacket Potato with Cheese, Baked Beans	Jacket Potato with Cheese, Baked Beans	Jacket Potato with Cheese, Baked Beans
Vegetables Carbs	Brown & White Rice Sweetcorn Peas	Potato Wedges Green Beans	Roast Potatoes Fresh Carrots Broccoli	Diced Potatoes Fresh Carrots Cauliflower	Chips Peas and Baked Beans
Sandwich Option (Blue)	Ham Packed Lunch	Cheese Packed Lunch	Tuna Packed Lunch	Ham Packed Lunch	Cheese Packed Lunch
Dessert	Waffle	Chocolate Cookie	American Pancakes with variety of toppings	Marble Sponge & Custard	Fruity Friday A selection of Fruit based desserts