



Pye Green Academy
Rosehill,
Cannock,
Staffordshire
WS12 4RT

Newsletter

Friday 17th January 2025

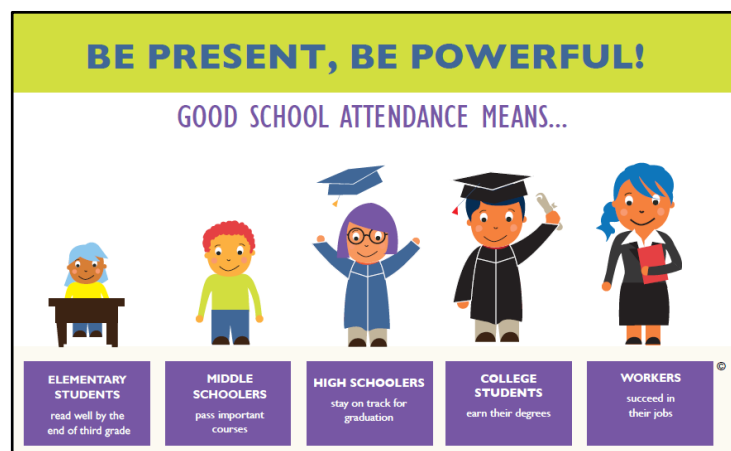
Tel: 01543 227175

GREENHEART
LEARNING PARTNERSHIP

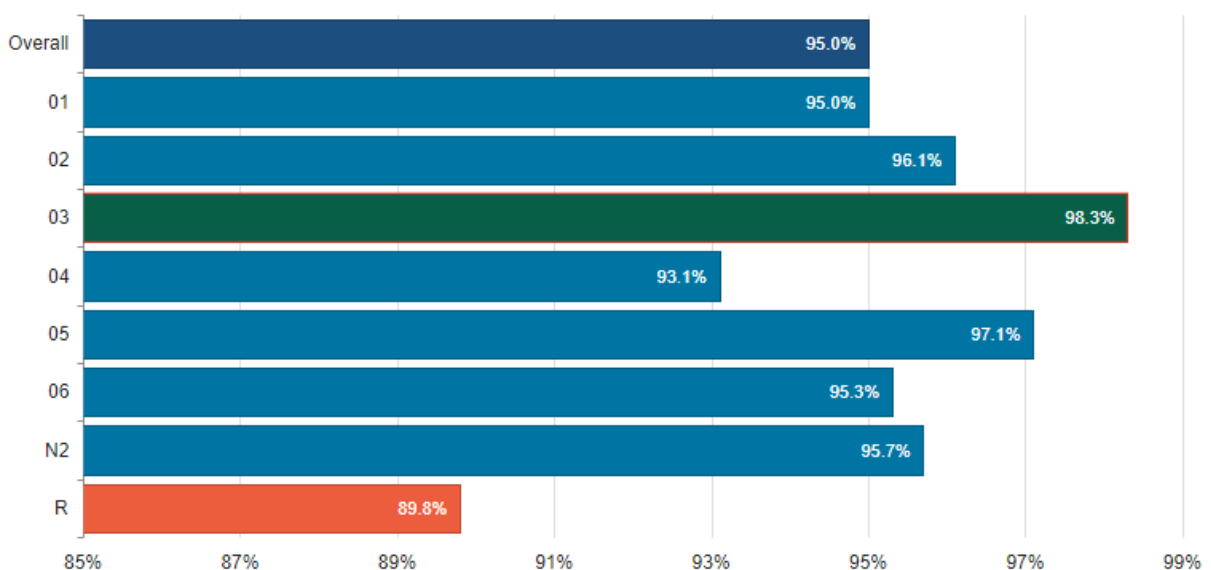
Menu for week
commencing
20/01/2025 showing on last page of newsletter

enquiries@pga.greenheartlearning.org

Attendance



Certificates will go to all classes with over 97% attendance.
Once they collect 6 certificates, they will enjoy a reward with their peers.



Congratulations to Year 3 for amazing attendance this week 😊
Fantastic attendance for Year 5 too this week.

[Greenheart Updates/School Developments](#)



This week, Mrs Barrott and Ms Ehrenmark met with Educational Psychologists from the local authority regarding a new pilot scheme for spelling that we have been asked to be part of. The resources, produced by McGraw Hill, have proven to boost spelling attainment significantly. We look forward to joining with other schools across Staffordshire and Warwickshire in the coming months to trial the resources.



Transition

Participation

Communication

Guidance

Induction

Home-School Links

[Key Stage 1 Meal Samples](#)

All children in Reception, Year 1 and Year 2 are entitled to a **free school meal** every day of the week. We have a wide range of freshly prepared, healthy options every day, including fresh fruit and vegetables. We would like to encourage more families to take up this free offer, rather than bring packed lunches from home.

With this in mind, we plan to offer pupils taster samples when they are in the hall, in the hope that some will be tempted to try some of the options on offer. Each week, a certain year group will be the focus and 10 children per day will receive the samples. Children will not be forced to try the samples but will be encouraged by staff. They will still be allowed to eat their packed lunch.

If your child has been chosen, please speak to them about the possibility of trying a school meal on some days of the week, if not every day. The menu is always included on the newsletter so you can speak to your child about the options. There is always a jacket potato and sandwich option too.

You may be surprised, sometimes children eat things in school they wouldn't even try at home!

Participation

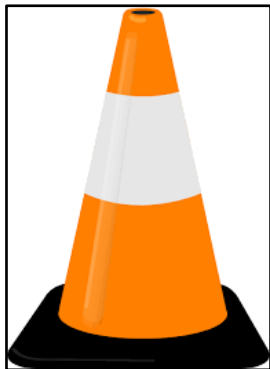
Home-School Links



Staff Car Park

For those who have permission to use the car park, please ensure that NO cones are moved at any time so that spaces can then be accessed.

These are used to reserve spaces for particular reasons and should remain in place.



Communication

Healthy Snacks at Break

Please remember that children should only be bringing 'healthy snacks' to school for break time. This should not include chocolate or crisps. Fruit is the preferred and most healthy option.

Too much sugar for children can also cause a build-up of acids in the mouth, which can cause tooth decay. Our bodies also have to draw on the nutrients from the rest of our diet to process the excess sugar - this can affect our immunity, leaving us more prone to bugs and colds.



PTFA Survey

This week, members of the PTFA met in school to start thinking about events for the coming year.

Below is a link to a survey so that you can also contribute thoughts/ideas about events that you might like to see offered in the future.

<https://www.surveymonkey.com/r/HB5B2K7>

I am excited to announce that the PTFA's current fundraising will be going towards providing the school with a 'book vending machine' which all pupils will be able to benefit from.



Participation

Home-School Links

Young Voices 2025

Yesterday, 4998 children became part of the largest choir in the World at BP Pulse Arena, Birmingham. Our children were an absolute credit to Pye Green and their families. Their behaviour was exemplary, and they joined in with everything, thoroughly enjoying themselves. Please see more examples of our amazing day on Twitter (X)



Participation

Pye Green Babies

I am really pleased to now be able to let you know that both Mrs Edwards (Year 2 Teacher) and Mrs Barrington (Year 2 Teaching Assistant) are both due to start maternity leave after the Easter holiday, with their babies due shortly afterwards.

We are excited to be welcoming more babies into the Pye Green Community this year.

For parents in Maple 1, more information about who will be replacing these members of staff for the summer term, will be shared in due course.



Communication

Community Shed – Now OPEN



From Monday, the Community Shed will now be fully open for families to take anything that is needed.

There are a range of tinned foods, cereals, pasta, squash and cosmetic items, including sanitary products.

Home-School Links



Also Attached to the Newsletter This Week

What's Happening Next Week?

- MTC (times tables) World Cup
- Y6 Football Tournament



Upcoming Events – More Details to Follow

Wednesday 29th January – Year 1 Come Dine with Me
Wednesday 29th January – Year 4 MTC Parents meeting am
Thursday 30th January – Year 4 MTC Parents meeting pm
Tuesday 4th February – Y5 to see Grease the Musical at Kingsmead
Wednesday 12th February – Parents' Evening
Thursday 13th February – Parents' Evening
Monday 24th February to Friday 28th February – Year 5 Bikeability (Level 1 and 2) 6 children per day
Tuesday 25th February – Nursery Open Evening (for prospective parents)
Wednesday 26th February – Nursery Open Evening (for prospective parents)
Wednesday 25th June – KS2 Jungle Book production
Wednesday 5th March – Year 2 Come Dine with Me
Thursday 6th March – World Book Day
Friday 7th March – Deadline for Nursery Applications
Thursday 13th March – Nursery Places Allocated for September 2025
Thursday 20th March – Nursery Places Deadline to Accept
Tuesday 1st April – Y5 British Cycling Session (Chestnut 1)
Tuesday 8th April – Y5 British Cycling Session (Chestnut 2)
Wednesday 9th April – Year 3 Come Dine with Me
Thursday 10th April – Year 4 Bikeability (Level 1)
Tuesday 29th April – Year 5 British Cycling Session on the Chase (session 1) further details to follow
Tuesday 6th May – Year 5 British Cycling Session on the Chase (session 2) further details to follow
Tuesday 13th May – Year 5 British Cycling Session on the Chase (session 3) further details to follow
Monday 19th May – Pye Green Academy Science Week
Tuesday 20th May – Year 5 British Cycling Session on the Chase (session 4) further details to follow
Wednesday 21st May – Year 4 Come Dine with Me
Monday 2nd June – Reception Dinosaur Day
Monday 9th June – Oceans Day
Wednesday 11th June – Year 5 Come Dine with Me
Wednesday 25th June – KS2 Jungle Book Production
Wednesday 9th July – Year 6 Leaver's Lunch
Wednesday 9th July – Year 6 Prom

Crucial Assessment Dates for 2024/2025

Throughout May 2025 – Y2 SATS tests (Please do not book holidays this month)
Monday 12th May – Thursday 15th May 2025 – Year 6 SATS (please do not book holidays this week)
Monday 2nd June – Friday 13th June 2025 – Y4 Times Tables Check (please do not book holidays this fortnight)
Monday 9th June – Friday 13th June 2025 – Year 1 Phonics Screening Week (Please do not book holidays this week)

Dates for 2025/2026 can be found by following the link <https://www.gov.uk/guidance/primary-assessments-future-dates>

School Year 2024 to 2025

Spring Term 2025

Term Starts: Tuesday 7th January

Holiday: Monday 17 February – Friday 21 February

Term Ends: Friday 11 April

Holiday: Monday 14 April – Friday 25 April

Summer Term 2025

Term Starts: Monday 28 April

May Day: Monday 5 May

Holiday: Monday 26 May – Friday 30 May

Monday 2nd June Inset day; school closed to children (INSET DAY 4)

Term Ends: Friday 18th July

Holiday: Monday 21st July – Friday 29 August

Monday 21st July Inset day; school closed to children (INSET DAY 5)

School Year 2025 to 2026

Autumn Term 2025

Monday 1 September INSET DAY – School closed to children (INSET DAY 1)

Term Starts: Tuesday 2 September

Holiday: Monday 27 October – Friday 31 October

Term Ends: Friday 19 December

Holiday: Monday 22 December – Friday 2 January

Spring Term 2026

Term Starts: Monday 5 January

Holiday: Monday 16 February – Friday 20 February

Term Ends: Friday 27 March

Holiday: Monday 30 March – Friday 10 April

Easter Sunday: Sunday 5 April

Summer Term 2026

Term Starts: Monday 13 April

May Day: Monday 4 May

Holiday: Monday 25 May – Friday 29 May

Term Ends: Monday 20 July

Holiday: Tuesday 21 July – Monday 31 August

Week Three Date W/C 20/01/2025

Primary Menu Week 3	MONDAY	TUESDAY Lego Day	WEDNESDAY	THURSDAY	FRIDAYS
Main Course (Red)	Pizza Naan	Bolognese Pasta Bake	Roast Beef & Gravy	Chicken in a Bun	Pizza Selection
Vegetarian Main Course (Green)	Quorn Dippers	Pasta Neapolitan	Quorn Balls & Gravy	Cheese & Onion Roll	Veggie Burrito
Yellow	Jacket Potato with Cheese, Baked Beans	Jacket Potato with Cheese, Baked Beans	Jacket Potato with Cheese, Baked Beans	Jacket Potato with Cheese, Baked Beans	Jacket Potato with Cheese, Baked Beans
Vegetables Carbs	Potato Crunchies Fresh Carrots Baked Beans	Garlic Bread Broccoli Mixed Salad	Mashed Potatoes Peas Cauliflower	Diced Potatoes Sweetcorn Fresh Carrots	Chips Green Beans Sweetcorn
Sandwich Option (Blue)	Ham Packed Lunch	Cheese Packed Lunch	Tuna Packed Lunch	Ham Packed Lunch	Cheese Packed Lunch
Dessert	Waffle	Lego Themed Cupcake	Cornflake Cake	Shortbread	Fruity Friday A selection of Fruit based desserts