



Pye Green Academy  
Rosehill,  
Cannock,  
Staffordshire  
WS12 4RT

# Newsletter

Friday 6<sup>th</sup> December 2024

Tel: 01543 227175



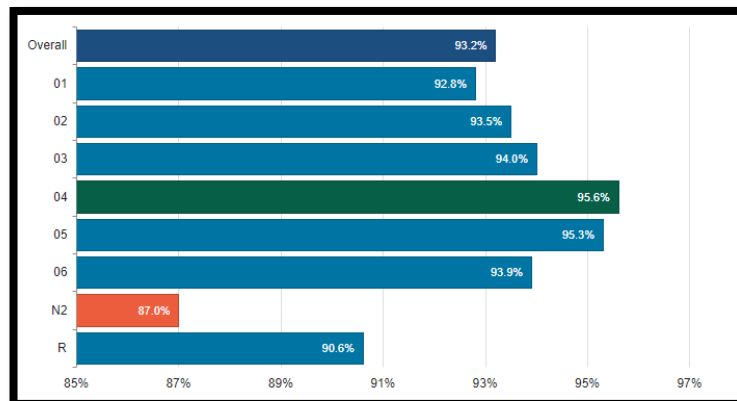
Menu for week commencing

09/12/2024 showing on last page of newsletter

[enquiries@pga.greenheartlearning.org](mailto:enquiries@pga.greenheartlearning.org)

## Attendance

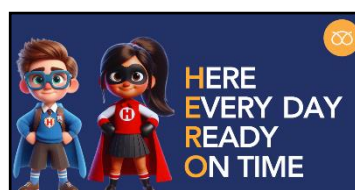
Regular attendance is **crucial** for your child's academic success and personal growth. We encourage parents to ensure **all pupils** attend school **every day**, on time and only miss school if they are genuinely too unwell to attend.



**Well done to Year 4 for having the best attendance this week.**

Below, you can see where Pye Green Academy are ranked within all schools in Staffordshire. We need to aim to be 'up there' with the best schools in Staffordshire. Please support us by supporting your child's attendance.

Attendance measure	Percentage	Ranking
Overall attendance	95.9%	You are ranked 153rd out of 303 schools
Overall absence	4.1%	You are ranked 153rd out of 303 schools
Authorised absence	2.9%	You are ranked 143rd out of 303 schools
Unauthorised absence	1.2%	You are ranked 197th out of 303 schools
Persistently absent	12.2%	You are ranked 183rd out of 303 schools
Severely absent	0.3%	You are ranked 185th out of 303 schools



## Greenheart Updates/School Developments



# GREENHEART

LEARNING PARTNERSHIP 



This week, our CEO Mrs Money and Mrs Terry, Director of Governance and Corporate Affairs, visited us at Pye Green. Both members of our Executive Leadership Team were so impressed with our children's enthusiasm and love of learning. They met all children from Nursery to Year 6 and, I must say, our children were a credit to us all.

Mrs Money spoke about the many positive changes that have occurred at Pye Green in the last couple of years and how the school continues to go from strength to strength.

I am very proud of our Pye Green community and excited to see what the future holds.

## Pupil Premium Funding for School

Please remember that if you claim any of the benefits listed below, you could be entitled to free school meals for your children throughout their time in school, food vouchers and discounted trips.

This is not automatic and you will need to register at [Apply for Free School Meals - Staffordshire County Council](#)

- Income Based Job Seekers Allowance.
- Income Support
- Income Related Employment and Support Allowance
- Eligible for Child Tax Credit
- Universal credit



All children in Reception, Year 1 and Year 2 are entitled to a free school meal – this is called Universal Infant Free School Meals. This is different to the above. Once in Key Stage 2 (from Year 3) unless people apply for the above and qualify, meals are charged at a daily rate.

## Start of the School Day

Please remember, all doors open at 8.40am.  
Children need to be in the building by 8.50am.



## Parent and Community Forum

Don't forget to register for our first meeting on Tuesday 10<sup>th</sup> December at 8.50am by [clicking here](#)

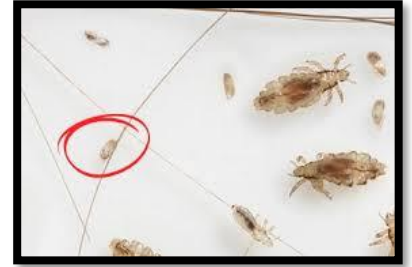


## Headlice

As with all schools, we have had recent reports of head lice among our students. While headlice are a nuisance, they do not carry disease and can be effectively treated.

Here are a few steps you can take to help manage and prevent headlice:

- **Please check your child's hair regularly for signs of headlice. Look for small, sesame-seed-sized insects and their eggs (nits), which are often found close to the scalp.**
- **If you find headlice, we recommend treating your child's hair with an appropriate lice treatment, which can be found at your local pharmacy. Follow the instructions carefully.**
- **Encourage your child not to share items that touch the head, such as combs, hats, and hair accessories.**
- **Wash bedding, clothing, and other personal items in hot water and dry them on high heat if your child has headlice. This helps to eliminate any remaining lice or nits.**



We appreciate your cooperation in keeping our school community healthy and headlice-free.

For more information on headlice prevention and treatment, please visit the NHS website [Head lice and nits - NHS](#)

## My Child at School Account

Please remember to regularly check you My Child at School account (MCAS) to see dinner money balance, trip payments and attendance.



## Tennis Opportunity

A promotional poster for Barclays Big Tennis Weekend LTA. The poster features the Barclays logo, the text 'BIG TENNIS WEEKEND LTA', and 'GIVE TENNIS A GO'. It includes details about a free tennis taster session on Saturday 7th December 2024, from 10am to 3pm, at Stafford Manor Indoor Tennis Centre, ST17 9DJ. The poster also features images of a woman and a boy playing tennis.

Join us at Stafford Manor Indoor Tennis Centre, meet our coaches and give tennis a go! Book onto a free tennis taster today!

Saturday 7th December 2024  
10am to 3pm  
Stafford Manor Indoor Tennis Centre  
ST17 9DJ

**Book your free place**  
[clubspark.lta.org.uk/smitc/Events](http://clubspark.lta.org.uk/smitc/Events)

## Christmas Productions

Next week, pupils within school will be taking part in their year group Christmas Productions. All parents are welcome to attend and there **will be no charge** for these events. All dates/times can be found on the 'upcoming events' section of this newsletter.

The PTFA will be in attendance selling raffle tickets and donations are welcome.

We ask that for each child, **no more than two people attend** the performance. This is due to hall space capacity and fire restrictions. Further information will be sent out next week.



## Christmas Fair – Friday 13th December

It's back and it's better than ever!  
Please join us after picking up your child – doors open at 3:30.

Tombola  
Craft market  
Variety of stalls  
Raffle tickets  
Chance to win a Meta3 Virtual Reality set  
Christmas games

Any donations for the stalls will be gratefully received. Please email or get in touch with the PTFA through the [PTFA Facebook group](#) or by emailing [pyegreenacademyptfa@gmail.com](mailto:pyegreenacademyptfa@gmail.com)



# Story with Santa

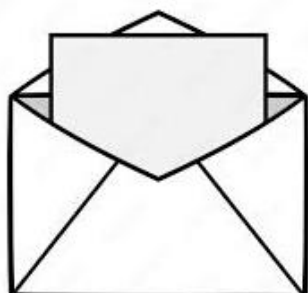
**Monday 16th December**

Join Santa for cookies and squash whilst he tells a Christmas story. Photo opportunity with a small gift included. Enjoy festive music with hot chocolate and mince pies on sale for the adults.

**3.45pm - 4.30pm Or 4.45pm - 5.30pm**  
£4.50 Per child / £3.00 Additional siblings  
Max 2 accompanying adults per booking  
Tickets on sale Tuesday 10th & Friday 13th December  
in the main school reception 3.30pm-4.15pm

## Also Attached to the Newsletter This Week

- Parking letter
- Parent and Community Forum Information



## What's Happening Next Week?

- Christmas Productions
- Christmas Dinner Day
- Christmas Fair



## IMPORTANT ANNOUNCEMENT

Unfortunately due to the severe weather warnings in place for Saturday, we have had to make the difficult decision to cancel Hednesford's Victorian Christmas Market and Light switch-on.

We understand the disappointment this will cause, but the safety of all concerned must come first.

Some of the planned activities will still go ahead indoors including Christmas crafts in the library, Santa and his treasure hunt and Santa's letterbox.

More details on locations and timings will be published in due course.



## SANTA'S TREASURE HUNT AND CHRISTMAS CRAFTS

Santa's elves are hard at work behind the scenes transforming part of the Lightworks and Hednesford Library into a makeshift North Pole for Saturday 7th, so that you can still have some festive fun with your little ones despite the light switch-on being cancelled.

Santa and his treasure hunt will be in operation in the Lightworks between 10am and 5pm

In Hednesford Library the Friends of Hednesford Park will be holding Christmas craft making activities from 10am until 1pm



### Upcoming Events – More Details to Follow

**Tuesday 10<sup>th</sup> December** – Nursery Christmas Sing Along

**Wednesday 11<sup>th</sup> December** – Reception Nativity @ 10am

**Wednesday 11<sup>th</sup> December** – Year 2 Christmas Performance @ 2pm

**Thursday 12<sup>th</sup> December** – Year 1 Christmas Performance @ 9.30am

**Friday 13<sup>th</sup> December** – Christmas Dinner Day

**Friday 13<sup>th</sup> December** – PTFA Christmas Fair (3.30pm start)

**Monday 16<sup>th</sup> December** – Year 3/4 Christmas Concert at Chadsmoor Methodist Church @ 1.30pm

Monday 16<sup>th</sup> December – PTFA Evening with Santa (ticket sales opening soon)

**Tuesday 17<sup>th</sup> December** – whole school pantomime

**Wednesday 18<sup>th</sup> December** - Year 5/6 Christmas Concert at Kingsmead @ 1.15pm – Please note a change of time

**Friday 20<sup>th</sup> December** – Police Cadets Celebration Assembly (Y5/6)

**Monday 6<sup>th</sup> January** – INSET Day (School Closed to all Pupils)

**Thursday 16<sup>th</sup> January** – Young Voices

**Wednesday 29<sup>th</sup> January** – Year 1 Come Dine with Me

**Wednesday 12<sup>th</sup> February** – Parents' Evening

**Thursday 13<sup>th</sup> February** - Parents' Evening

**Monday 24<sup>th</sup> February to Friday 28<sup>th</sup> February** – Year 5 Bikeability (Level 1 and 2) 6 children per day

**Wednesday 25<sup>th</sup> June** – KS2 Jungle Book production

**Wednesday 5<sup>th</sup> March** – Year 2 Come Dine with Me

**Thursday 6<sup>th</sup> March** – World Book Day

**Wednesday 9<sup>th</sup> April** – Year 3 Come Dine with Me

**Thursday 10<sup>th</sup> April** – Year 4 Bikeability (Level 1)

**Wednesday 21<sup>st</sup> May** – Year 4 Come Dine with Me

**Wednesday 11<sup>th</sup> June** – Year 5 Come Dine with Me

**Wednesday 9<sup>th</sup> July** – Year 6 Leaver's Lunch

**Wednesday 9<sup>th</sup> July** – Year 6 Prom

### Crucial Assessment Dates for 2024/2025

**Throughout May 2025** – Y2 SATS tests (Please do not book holidays this month)

**Monday 12<sup>th</sup> May – Thursday 15<sup>th</sup> May 2025** – Year 6 SATS (please do not book holidays this week)

**Monday 2<sup>nd</sup> June – Friday 13<sup>th</sup> June 2025** – Y4 Times Tables Check (please do not book holidays this fortnight)

**Monday 9<sup>th</sup> June – Friday 13<sup>th</sup> June 2025** – Year 1 Phonics Screening Week (Please do not book holidays this week)

Dates for 2025/2026 can be found by following the link <https://www.gov.uk/guidance/primary-assessments-future-dates>

## School Year 2024 to 2025

### Autumn Term 2024

**Term Ends:** Friday 20 December

**Holiday:** Monday 23 December – Friday 3 January

### Spring Term 2025

Monday 6<sup>th</sup> January Inset day, school closed to children (INSET DAY 3)

**Term Starts:** Tuesday 7<sup>th</sup> January

**Holiday:** Monday 17 February – Friday 21 February

**Term Ends:** Friday 11 April

**Holiday:** Monday 14 April – Friday 25 April

### Summer Term 2025

**Term Starts:** Monday 28 April

**May Day:** Monday 5 May

**Holiday:** Monday 26 May – Friday 30 May

Monday 2<sup>nd</sup> June Inset day, school closed to children (INSET DAY 4)

**Term Ends:** Friday 18<sup>th</sup> July

**Holiday:** Monday 21<sup>st</sup> July – Friday 29 August

Monday 21<sup>st</sup> July Inset day, school closed to children (INSET DAY 5)

---

## School Year 2025 to 2026

### Autumn Term 2025

Monday 1 September INSET DAY – School closed to children (INSET DAY 1)

**Term Starts:** Tuesday 2 September

**Holiday:** Monday 27 October – Friday 31 October

**Term Ends:** Friday 19 December

**Holiday:** Monday 22 December – Friday 2 January

**Spring Term 2026**

**Term Starts:** Monday 5 January

**Holiday:** Monday 16 February – Friday 20 February

**Term Ends:** Friday 27 March

**Holiday:** Monday 30 March – Friday 10 April

**Easter Sunday:** Sunday 5 April

**Summer Term 2026**

**Term Starts:** Monday 13 April

**May Day:** Monday 4 May

**Holiday:** Monday 25 May – Friday 29 May

**Term Ends:** Monday 20 July

**Holiday:** Tuesday 21 July – Monday 31 August

**Week Two Date W/C 09/12/2024**

Primary Menu Week 2	MONDAY	TUESDAY	WEDNESDAY	THURSDAY	FRIDAY Christmas Dinner
Main Course (Red)	Chicken Goujons	Pasta Bolognese	Roast Pork & Gravy	Chicken Tikka Masala	Roast Turkey Chipolata Sausage
Vegetarian Main Course (Green)	Vegetable Lasagne v	Country Vegetable Bake v	Shepherdess Pie v	Quorn Burger v	Festive Quorn Fillet v
Yellow	Jacket Potato with Cheese, Baked Beans	Jacket Potato with Cheese, Baked Beans	Jacket Potato with Cheese, Baked Beans	Jacket Potato with Cheese, Baked Beans	No Jacket Potato Option
Vegetables Carbs	Potato Crunchies Sweetcorn Fresh Carrots	Brown & white Rice Cauliflower Green Beans	Roast Potatoes Fresh Carrots Cauliflower	Brown & white Rice Diced potatoes Garden Peas Fresh Carrots	Herby Roast Potatoes Seasonal Vegetables Stuffing Balls
Sandwich Option (Blue)	Ham Packed Lunch	Cheese Packed Lunch	Tuna Packed Lunch	Ham Packed Lunch	No Sandwich Option
Dessert	Mini Doughnut	Syrup Sponge Custard	Chocolate Shortbread	Fruit Jelly	Christmas Biscuits Festive Pudding